

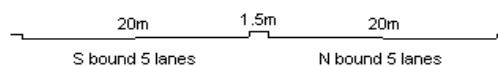
YEAR 2013

CORE STATION 5030

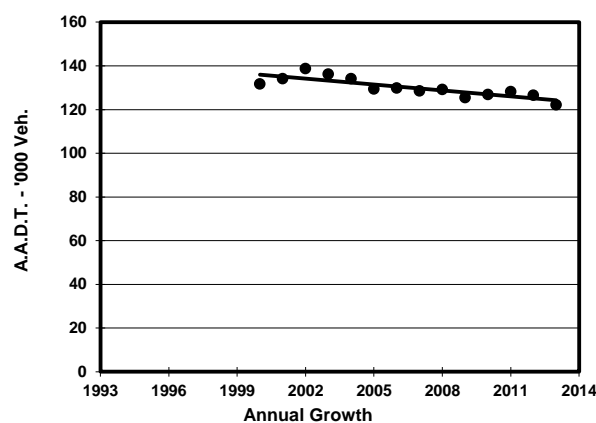
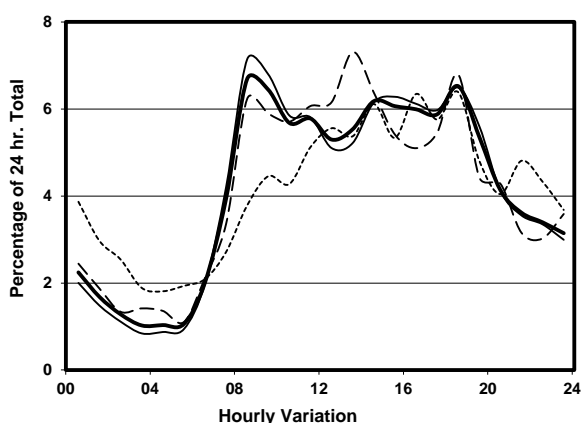
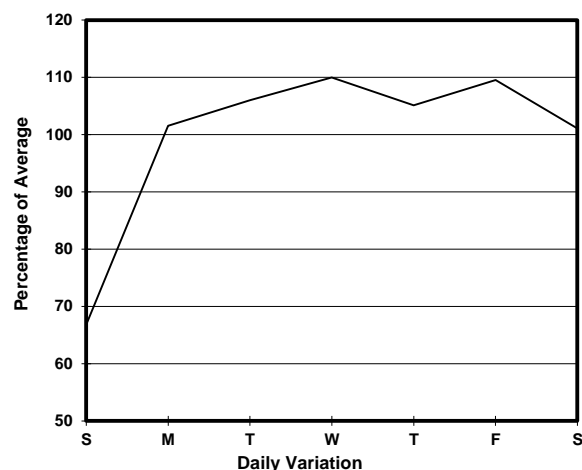
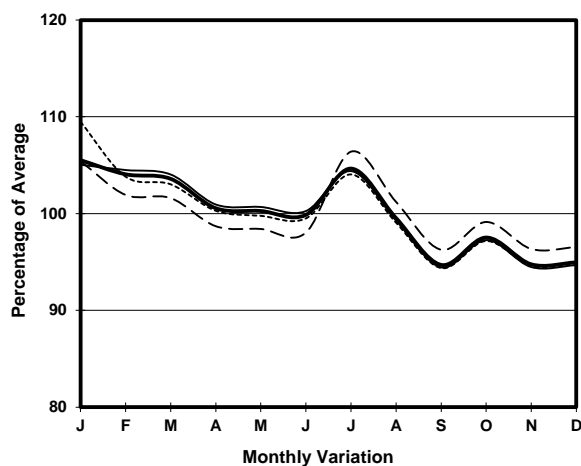
ROAD NETWORK MAJOR

ROAD TYPE URBAN TRUNK ROAD

LINK KWAI CHUNG RD (from PMH INT SLIP RD TO KWAI CHUNG RD N-B to TSUEN WAN RD)



1. TRAFFIC FLOW VARIATION AND GROWTH



2. TRAFFIC CHARACTERISTICS (BY DIRECTION)

Parameter	All - Day	Mon. - Fri.	Sat.	Sun.
SOUTH BOUND				
A.A.D.T.	59770	65240	60450	39480
R 12 / 24 - %	73.5	74.5	73.3	66.4
R 16 / 24 - %	87.9	88.9	86.1	82.5
AM Peak Hour	0800-0900	0800-0900	0900-1000	0900-1000
One-way flow at AM peak hour	4570	5320	4300	1850
T - % (AM)	-	17.9	-	-
PM Peak Hour	1800-1900	1800-1900	1800-1900	1800-1900
One-way flow at PM peak hour	3820	4100	3760	2940
T - % (PM)	-	11.8	-	-
Prop.of commercial vehicles - 16 hr.	-	17.2	-	-
NORTH BOUND				
A.A.D.T.	62340	67130	65170	43600
R 12 / 24 - %	66.6	67.9	66.7	56.5
R 16 / 24 - %	85.2	86.7	83.5	76.3
AM Peak Hour	0900-1000	0900-1000	0800-0900	0900-1000
One-way flow at AM peak hour	3780	4390	3590	1850
T - % (AM)	-	13.2	-	-
PM Peak Hour	1800-1900	1800-1900	1800-1900	1600-1700
One-way flow at PM peak hour	4150	4490	4780	2650
T - % (PM)	-	14	-	-
Prop.of commercial vehicles - 16 hr.	-	17.2	-	-

3. OTHER INFORMATION AND COMMENT

4. Vehicle classification and occupancy - Monday to Friday

Time		Class of vehicle									
		Motor Cycle	Private Car	Taxi	Private LB	PLB	Goods veh.		Non Fr. Bus	Fr. Bus	
							Light	M & H		SD	DD
0700-0800	Pro	6.6	19.7	16.9	1.4	3.7	28.4	13.1	5.7	0.1	4.4
	Ocp	1.1	1.3	2.1	4.7	14.3	1.3	1.2	9.7	21.7	55.3
0800-0900 Peak hour	Pro	4.2	34.3	16.0	0.5	4.2	24.4	10.0	3.1	0.1	3.3
	Ocp	1.1	1.3	2.0	3.3	12.9	1.5	1.4	23.1	1.0	57.1
0900-1000	Pro	2.8	29.4	14.4	0.3	3.1	35.3	10.0	1.3	0.1	3.5
	Ocp	1.0	1.2	1.9	1.0	9.6	1.5	1.4	10.8	7.0	28.5
1000-1100	Pro	2.3	25.7	12.3	0.5	2.0	39.2	13.9	0.7	0.1	3.3
	Ocp	1.0	1.3	1.8	2.2	9.5	1.3	1.2	15.9	5.0	24.4
1100-1200	Pro	3.2	26.9	9.6	0.8	2.3	39.5	13.1	1.2	0.1	3.3
	Ocp	1.1	1.2	1.9	1.8	7.5	1.4	1.3	13.2	1.8	25.8
1200-1300	Pro	2.4	24.1	9.6	0.8	1.9	40.4	15.8	1.6	0.0	3.4
	Ocp	1.0	1.3	1.9	3.9	7.5	1.4	1.3	8.5	0.0	30.7
1300-1400	Pro	1.3	27.7	9.7	1.1	1.8	38.2	14.8	1.5	0.1	3.8
	Ocp	1.1	1.3	2.1	1.4	8.9	1.4	1.3	10.0	5.3	27.6
1400-1500	Pro	2.6	25.7	8.9	0.7	1.8	39.3	16.8	1.2	0.1	3.1
	Ocp	1.1	1.4	2.1	1.4	9.9	1.5	1.4	9.0	5.3	31.3
1500-1600	Pro	2.5	28.6	10.4	0.4	1.7	37.3	14.4	1.3	0.0	3.4
	Ocp	1.1	1.4	2.0	4.9	9.7	1.5	1.4	14.6	0.0	33.0
1600-1700	Pro	2.4	31.1	11.5	1.1	1.9	32.5	13.3	2.5	0.1	3.6
	Ocp	1.0	1.3	2.1	2.9	10.6	1.4	1.3	6.6	5.5	38.6
1700-1800	Pro	4.1	32.6	10.9	1.3	2.1	31.8	10.5	2.9	0.1	3.8
	Ocp	1.0	1.3	1.8	1.8	12.0	1.5	1.3	9.1	10.5	47.9
1800-1900	Pro	5.3	42.0	14.1	0.4	4.4	20.8	7.8	2.1	0.0	3.1
	Ocp	1.1	1.3	1.9	2.0	15.9	1.4	1.2	25.7	0.0	67.4
1900-2000	Pro	3.7	49.6	12.0	0.2	5.1	15.2	7.5	3.2	0.1	3.5
	Ocp	1.1	1.3	2.0	1.0	13.5	1.2	1.2	12.2	8.0	50.2
2000-2100	Pro	4.8	47.3	16.0	0.1	5.3	12.6	7.6	2.3	0.1	3.9
	Ocp	1.1	1.4	1.9	2.5	11.3	1.4	1.2	9.1	7.0	39.7
2100-2200	Pro	3.8	43.5	22.1	0.2	6.9	9.8	6.8	1.8	0.1	5.1
	Ocp	1.1	1.5	2.0	1.5	10.5	1.2	1.0	9.9	6.0	36.5
2200-2300	Pro	3.1	41.2	24.9	0.3	8.3	9.1	5.7	1.4	0.1	6.0
	Ocp	1.0	1.5	1.9	2.0	10.9	1.3	1.1	9.6	3.0	33.6
16 hours	Pro	3.4	32.7	13.2	0.6	3.3	29.4	11.5	2.1	0.1	3.7
	Ocp	1.1	1.3	2.0	2.6	11.5	1.4	1.3	13.1	6.7	39.7

Legend

- Pro.** Proportion of vehicles in % (Sum may not add up to 100% due to figure rounding)
Ocp. Average occupancy of vehicles
M&H Medium and Heavy